

MANNER
SENORTELEMETRIE

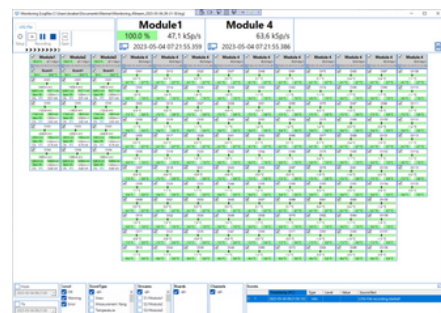
Aero Engine & Turbomachinery Telemetry

Data at a glance

- ✎ Up to 170°C (338°F) temperature resistant
- ✎ Up to 256 simultaneous channels
- ✎ Up to 200 kHz sample rate @ 16 bit resolution
- ✎ Fully digital transmission
- ✎ Fully remotely adjustable
- ✎ Real-time telemetry health monitoring
- ✎ Modular & flexible for in-situ measurements
- ✎ Miniaturized by ultra-high package density engineered to the customer's needs
- ✎ Analysis Software engineered by MANNER
- ✎ APEX Software interface

System Setup / Monitoring / Data Analysis & Acquisition

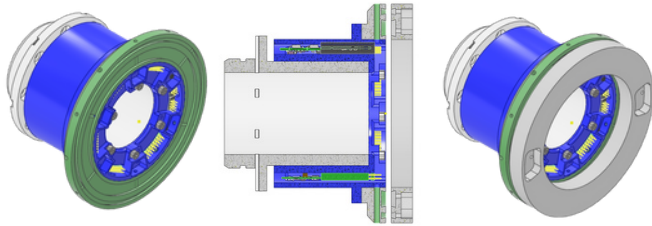
- ✎ System setup
- ✎ Acquisition of data
- ✎ Monitoring the health data of the telemetry system
- ✎ Monitoring the health data of the sensors, identifying
 - Open lines
 - Shortcut lines
- ✎ Defining trigger values for alerts
- ✎ Data around the alert will be recorded to able to investigate later
- ✎ Realtime analyzing tools like
 - FFT
 - Waterfall Charts
 - Oscilloscope
 - Bargraph
 - xy-Diagram
 - Order Diagram



Exampels

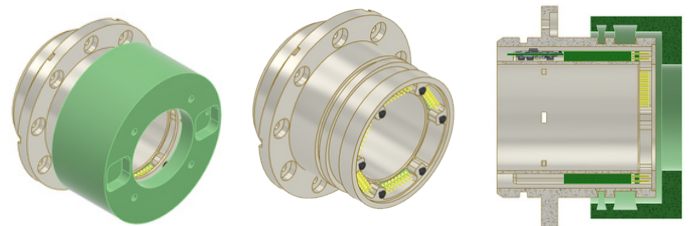
AXIAL:

Axial coupler configuration
Flexy System with exchangeable modules



RADIAL:

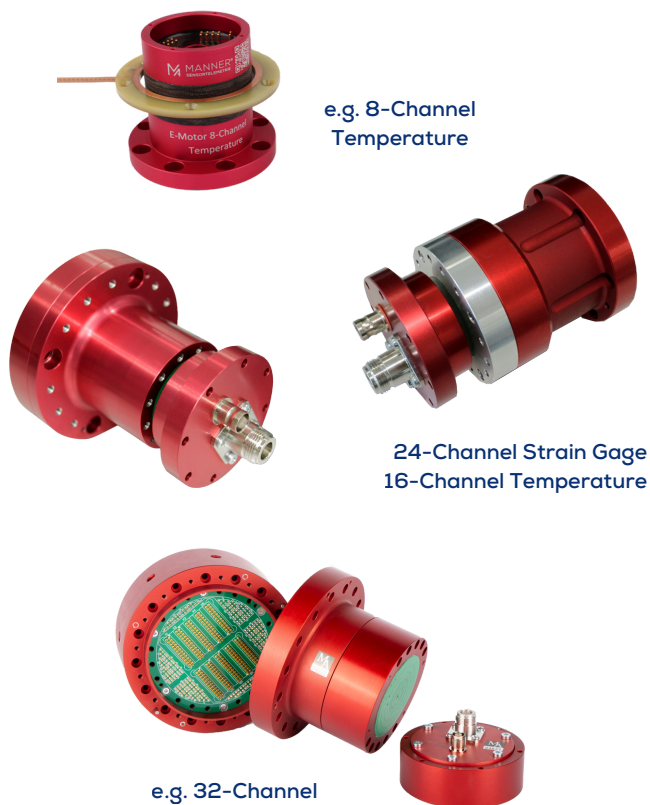
Radial coupler configuration
Flexy System with exchangeable modules



Examples End of Shaft Solution

ALUMINIUM VERSION

Available up to 64 Channels

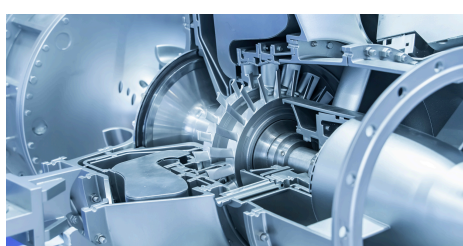


TITAN VERSION

Available up to 64 Channels



Outstanding - "There is no Mission Impossible for MANNER!"



MANNER Sensortelemetrie GmbH

Eschenwasen 20, 78549 Spaichingen

Tel. Nr.: +49 7424 93290 Email: info@sensortelemetrie.de

