

MANNER
SENORTELEMETRIE

Measurement task for GEAR shafts

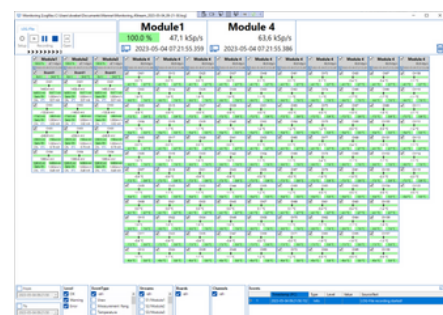
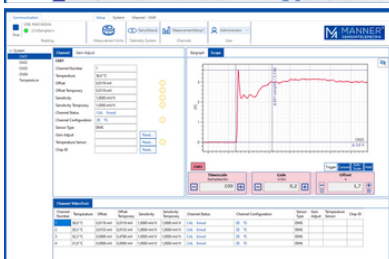
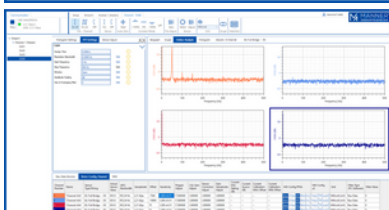
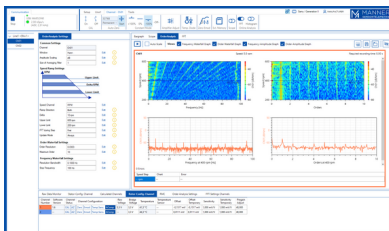
Data at a glance

- Up to 160°C temperature resistant
- Up to 20 kHz sample rate @ 16 bit resolution
- Fully digital transmission
- Fully remotely adjustable
- Real-time telemetry health monitoring
- Modular & flexible for in-situ measurements
- Miniaturized by ultra-high package density engineered to the customer's needs
- Analysis Software engineered by MANNER



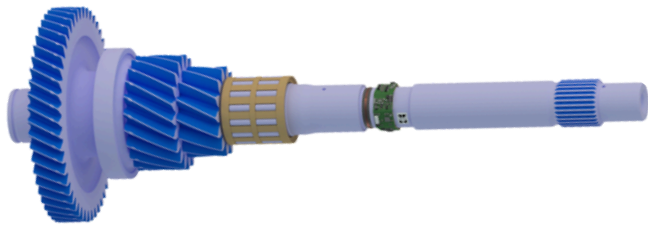
System Setup / Monitoring / Data Analysis & Acquisition

- System setup
- Acquisition of data
- Monitoring the health data of the telemetry system
- Monitoring the health data of the sensors, identifying
 - Open lines
 - Shortcut lines
- Defining trigger values for alerts
- Data around the alert will be recorded to able to investigate later
- Realtime analyzing tools like
 - FFT
 - Waterfall Charts
 - Oscilloscope
 - Bargraph
 - xy-Diagram
 - Order Diagram

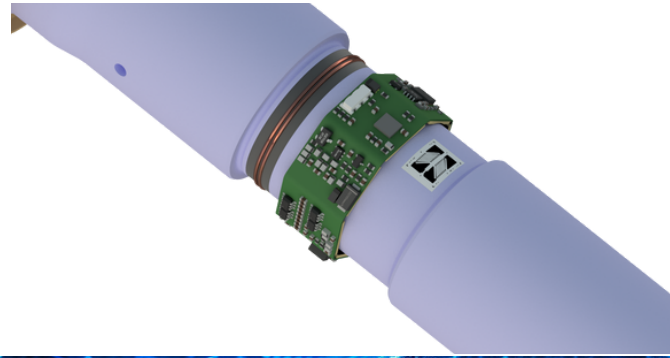


Instrumentation

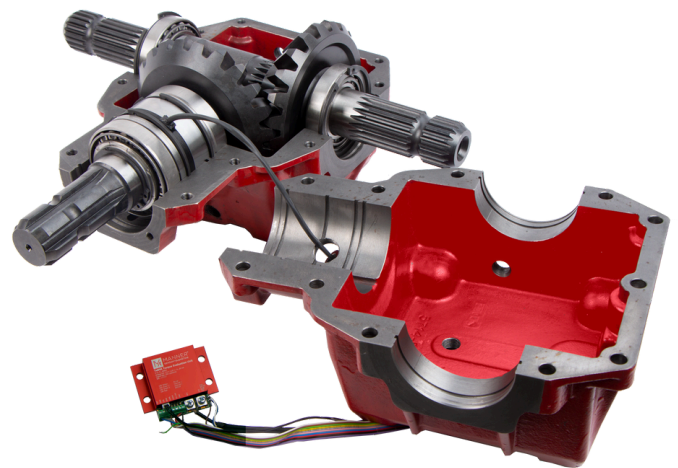
TYPICAL MEASUREMENT TASK FOR GEAR SHAFTS



CLOSE UP SCHEMATIC VIEW OF THE MINIATURIZED ROTOR ELECTRONICS



Examples



Rögelberg Getriebe mit integriertem TelMA Torque System zur Drehmoment-, Temperatur- und Drehzahlerfassung

Outstanding - "There is no Mission Impossible for MANNER!"



MANNER Sensortelemetrie GmbH
Eschenwasen 20, 78549 Spaichingen
Tel. Nr.: +49 7424 93290 Email: info@sensortelemetrie.de

